



## Rabbit anti Nucleophosmin(pS70) Phosphospecific Antibody

Alternative Name(s): nan

### Order Information

- **Description:** Nucleophosmin (NPM) (pS70)
- **Catalogue:** 630-540
- **Lot:** See label
- **Size:** 100ug/200ul
- **Host:** Rabbit
- **Clone:** nan
- **Application:** IHC(P), WB
- **Reactivity:** Hu, Ms, Rt, Bv

### **ANTIGEN PREPARATION**

A synthetic peptide corresponding to AEAMNYEG-S\*(PO3H2)-PIKVTLAT with a phosphorylation site of serine 70. This sequence is identical to human, mouse, rat.

### **BACKGROUND**

Nucleophosmin (NPM) is a member of the nucleophosmin/nucleoplasmin family that shuttles between the nucleus and cytoplasm. This protein regulates the stability and transcriptional activity of p53 and acts as a molecular chaperone. It preferentially binds to denatured proteins and has been shown to stimulate DNA polymerase activity and control the duplication of centrosomes. The chaperone activity of nucleophosmin is regulated by protein kinase CK2 and promotes the release of denatured substrates from nucleophosmin. The phosphorylation of NPM is associated in its interaction with nucleolar proteins including nucleolin, protein P120, HIV-1 Rev protein, and hepatitis delta antigens.

### **PURIFICATION**

The Rabbit IgG is purified by Epitope Affinity Purification

### **FORMULATION**

This affinity purified antibody is supplied in sterile Tris-buffered saline (pH7.2) containing antibody stabilizer

### **SPECIFICITY**

This antibody recognizes human Nucleophosmin (NPM) (pS70) protein with a phosphorylation site Serine 70. It cross reacts to human, mice and rat.

### **STORAGE**

The antibodies are stable for 24 months from date of receipt when stored at -20oC to -70oC. The antibodies can be stored at 2oC-8oC for three month without detectable loss of activity. Avoid repeated freezing-thawing cycles.

### **APPLICATIONS/SUGGESTED WORKING DILUTIONS\***

- Western Blot: 0.1-1 µg/ml
- ELISA: 0.01-0.1 µg/ml
- Immunoprecipitation: 2-5 µg/ml
- IHC: 2-10 µg/ml
- Flow cytometry: Not tested
- Molecular Weight: 35.0
- Positive Control: Kidney Tissue
- Cellular Location: Cell Membrane

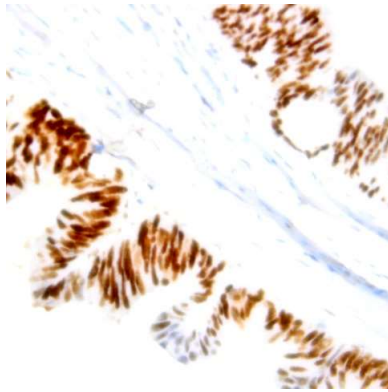
\*Optimal dilutions should be determined by researchers for the specific applications.

### **FOR RESEARCH USE ONLY.**

AbboMax, Inc 2528 Qume Drive, Suite 8, San Jose, California 95131, USA  
1 408-573-1898 (Tel). 1 408-573-1858 (Fax). [www.abbomax.com](http://www.abbomax.com) [info@abbomax.com](mailto:info@abbomax.com)



## DATA ATTACHMENTS



Immunohistochemistry: Human breast carcinoma (FFPE) stained with Rabbit anti-Nucleophosmin (NPM) (pS70) (Cat# 630-540) at 1:200 for 10 min @ RT. Staining of formalin-fixed tissue requires boiling tissue sections in 10 mM Citrate Buffer, pH 6.0 for 10 min followed by cooling at RT for 20 min.

## REFERENCES

### FOR RESEARCH USE ONLY.

AbboMax, Inc 2528 Qume Drive, Suite 8, San Jose, California 95131, USA  
1 408-573-1898 (Tel). 1 408-573-1858 (Fax). [www.abbomax.com](http://www.abbomax.com) [info@abbomax.com](mailto:info@abbomax.com)